



Try To Spot Them All!



River Birch



Invasive Species
Purple Loosestrife



Green Frog

Black Willow



Cardinal Flower



Bullfrog



Steeplebush



Blue Flag Iris



Pickerel Frog

Buttonbush



Skunk Cabbage



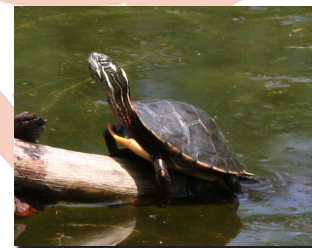
Red-spotted Newt



Swamp Milkweed



Lurid Sedge



Painted Turtle

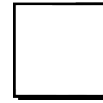
Aquatic Habitats of the Lehigh Gap Nature Center



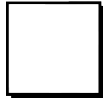
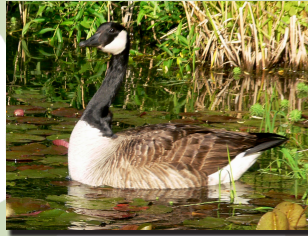
Great Blue Heron



Yellow Warbler



Canada Goose



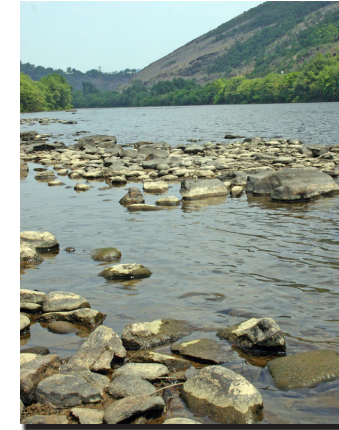
Red-winged Blackbird



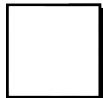
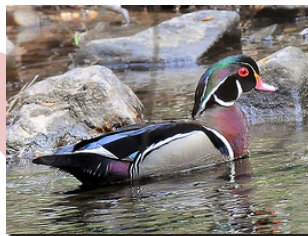
Mallard



Muskrat



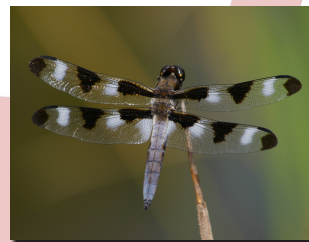
Wood Duck



Widow Skimmer



Belted Kingfisher



Twelve-spotted Skimmer



The **Lehigh Gap Nature Center** is home to several aquatic habitats including the Lehigh River, a riparian zone (along the river), the Kittatinny Ponds, and the surrounding wetlands. The beautiful Lehigh River defines the northern and eastern boundaries of the refuge, and the Kittatinny Ponds are situated in the northwestern corner.



Funding for this brochure was provided by

