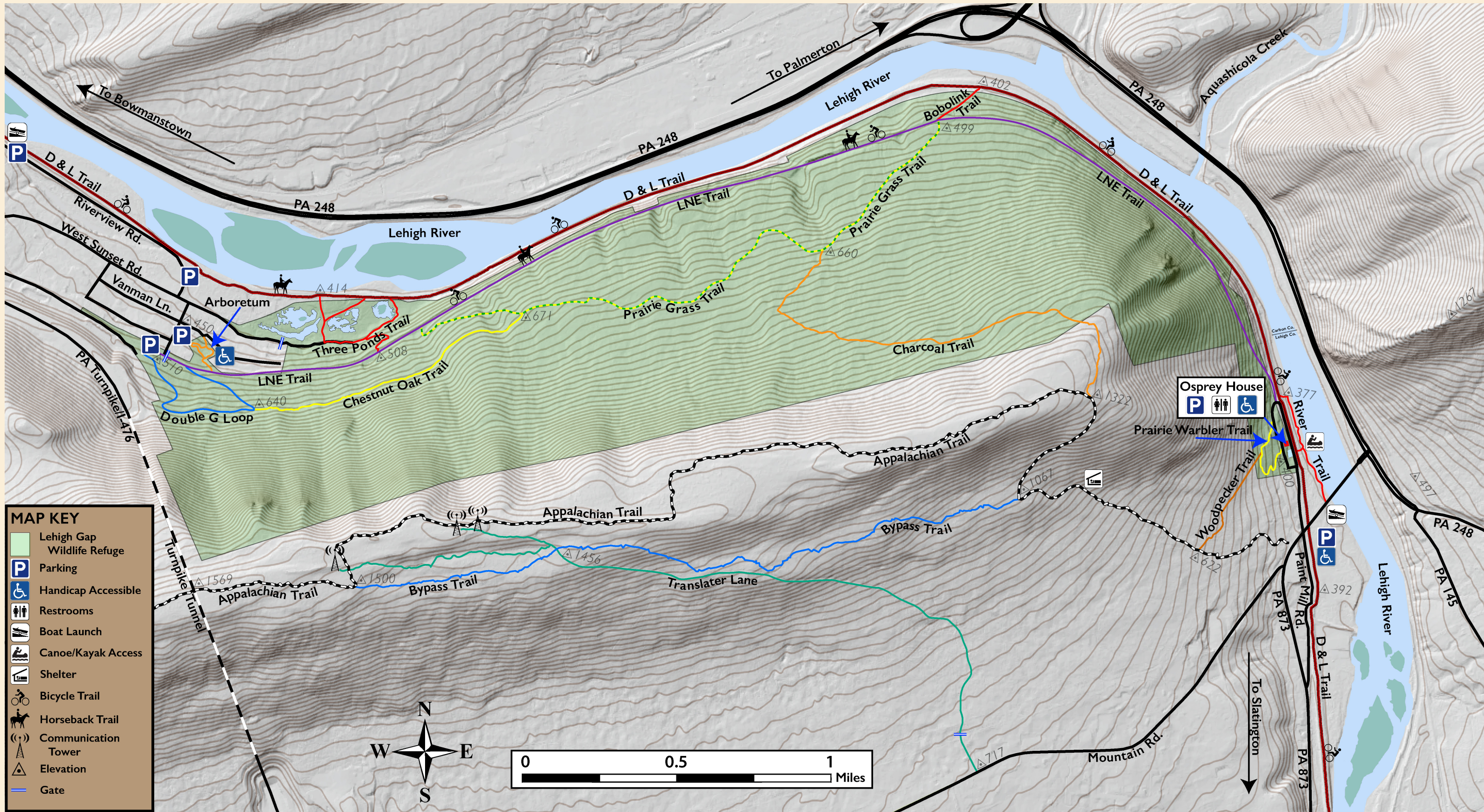




Lehigh Gap Nature Center

Trail System

All trails are open from dawn to dusk. Biking is allowed on the D&L Trail, Bobolink Trail, and LNE Trail west of the Bobolink Trail. Horseback riding is allowed on the same trails, but in Carbon County only. Motorized vehicles, hunting, weapons, and camping are prohibited on the Refuge.



MAP KEY

- Lehigh Gap Wildlife Refuge
- Parking
- Handicap Accessible
- Restrooms
- Boat Launch
- Canoe/Kayak Access
- Shelter
- Bicycle Trail
- Horseback Trail
- Communication Tower
- Elevation
- Gate