



Ebony Jewelwing
Calopteryx maculata
to 2.2 in.



Powdered Dancer
Argia moesta
to 1.4 in.



Fragile Forktail
Ischnura posita
to 1.1 in.



Calico Pennant
Celithemis elisa
to 1.4 in.

**Amber-winged
Spreadwing**
Lestes eurinus
to 2.1 in.



Azure Bluet
Enallagma aspersum
to 1.3 in.



Eastern Forktail
Ischnura verticalis
to 1.2 in.



Eastern Pondhawk
Erythemis simplicicollis
to 1.9 in.



Elegant Spreadwing
Lestes inaequalis
to 1.9 in.



Familiar Bluet
Enallagma civile
to 1.5 in.



**Common Green
Darner**
Anax junius
to 3.1 in.



Dot-tailed Whiteface
Leucorrhinia intacta
to 1.3 in.

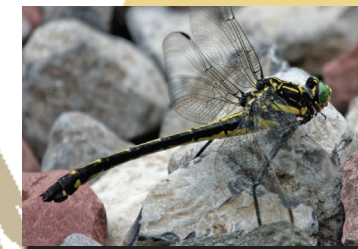
Violet Dancer
Argia fumipennis
to 1.4 in.



Stream Bluet
Enallagma exsulans
to 1.5 in.



**Black-shouldered
Spinyleg**
*Dromogomphus
spinosus*
to 2.6 in.



Spangled Skimmer
Libellula cyanea
to 1.9 in.





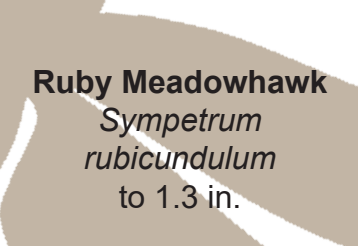
Slaty Skimmer
Libellula incesta
to 2.2 in.



Common Whitetail
Plathemis lydia
to 1.9 in.



Widow Skimmer
Libellula luctuosa
to 2.0 in.



Ruby Meadowhawk
Sympetrum rubicundulum
to 1.3 in.



Twelve-spotted Skimmer
Libellula puchella
to 2.1 in.



Autumn Meadowhawk
Sympetrum vicinum
to 1.4 in.



Blue Dasher
Pachydiplax longipennis
to 1.7 in.



Black Saddlebags
Tramea abdominalis
to 2.2 in.



LGNC Dragonfly and Damselfly Checklist:

- Ebony Jewelwing
- Elegant Spreadwing
- Amber-winged Spreadwing
- Slender Spreadwing
- Swamp Spreadwing
- Eastern Red Damsel
- Violet (Variable) Dancer
- Powdered Dancer
- Blue-fronted Dancer
- Dusky Dancer
- Azure Bluet
- Familiar Bluet
- Hagen's Bluet
- Orange Bluet
- Stream Bluet
- Fragile Forktail
- Rambur's Forktail
- Eastern Forktail
- Common Green Darner
- Fawn Darner
- Shadow Darner
- Black-shouldered Spinyleg
- Dragonhunter
- Lancet Clubtail
- Twin-spotted Spiketail
- Prince Baskettail
- Common Baskettail
- Calico Pennant
- Eastern Pondhawk
- Dot-tailed Whiteface
- Spangled Skimmer
- Slaty Skimmer
- Widow Skimmer
- Twelve-spotted Skimmer
- Blue Dasher
- Common Whitetail
- Ruby Meadowhawk
- Autumn Meadowhawk
- Black Saddlebags

Lehigh Gap Nature Center

Dragonfly & Damselfly Guide

Dragonflies and Damselflies of the Lehigh Gap



8844 Paint Mill Rd., Slatington, PA 18080

www.lgnc.org | mail@lgnc.org | 610-760-8889

Photos by Corey Husic and Dan Kunkle